

Day 10, Day of Assignment

Worksheet Level 3:

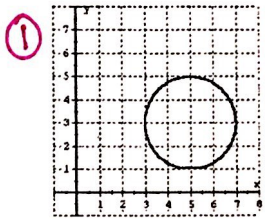
Concept # _____

Goals:

Use the Vertical Line Test to Identify functions from a graph
Identify functions from tables and diagrams.

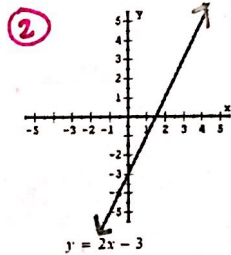
Practice #1

State whether each graph represents a function or not. ** Then, write the domain + Range for each one.*



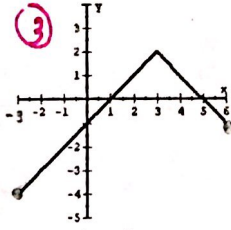
$(x - 5)^2 + (y - 3)^2 = 4$

Function?



$y = 2x - 3$

Function?



$y = -|x - 3| + 2$

Function?

① D =
R =

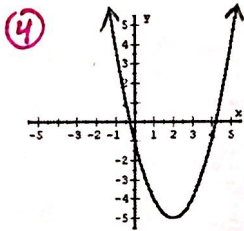
②

③

④

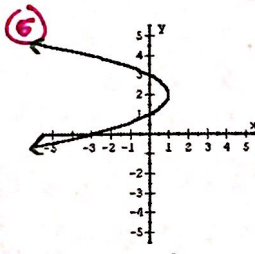
⑤

⑥



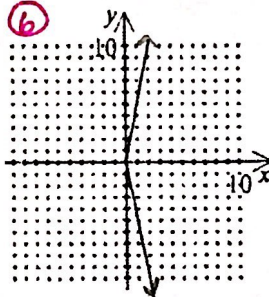
$y = (x - 2)^2 - 5$

Function?

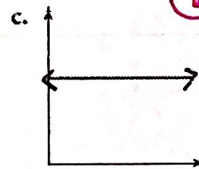
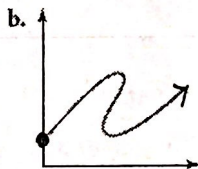
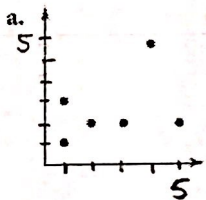


$x = -(y - 2)^2 + 1$

Function?



Find whether each graph represents a function.



Ⓐ

Ⓑ

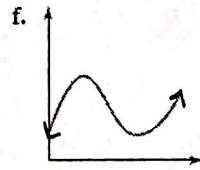
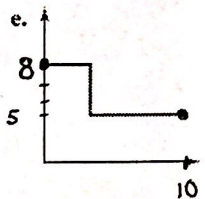
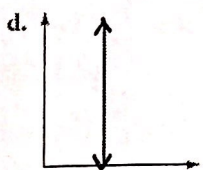
Ⓒ

Ⓓ

Ⓔ

Ⓕ

Ⓖ



Explain how you know if a graph is a function or not: